

The Smart Saving T5 Adaptors taking fluorescents to a new efficiency level!



Types

- SES-T5-14W is for replacing the existing T8 Tube 18W (600mm)
- SES-T5-21W is for replacing the existing T8 Tube 30W (900mm)
- SES-T5-28W is for replacing the existing T8 Tube 36W (1200mm)
- SES-T5-35W is for replacing the existing T8 Tube 58W (1500mm)

Application

Business Premises, Factories, Schools, Supermarkets, Offices, Hospitals, Hotels, Multi Storey Car Parks etc...

The SES-T5 Adaptors are for updating T8 T10 T12 fluorescent lamps to the new efficient T5's. Fit easily, the T5 adaptor saves both energy and installation costs.

T5 consumes only a fraction of the energy required by the traditional T8 T10 T12 tubes while maintaining the same brightness. Savings on electricity can be up to as much as 57% when compared with the old fittings.

The Features

1. Dramatic savings on electricity, savings of between 35 and 57%, depending on existing fittings.
2. Recovery on investment costs can be as little as 6 months; this is dependent on quantities changed out. Payback Periods normally span from 6 to 10 Months.
3. Lighting Brightness is 10% greater than the ordinary electric incandescent lamp.
4. Excellent performance, no flash, no pollution and long lifespan.

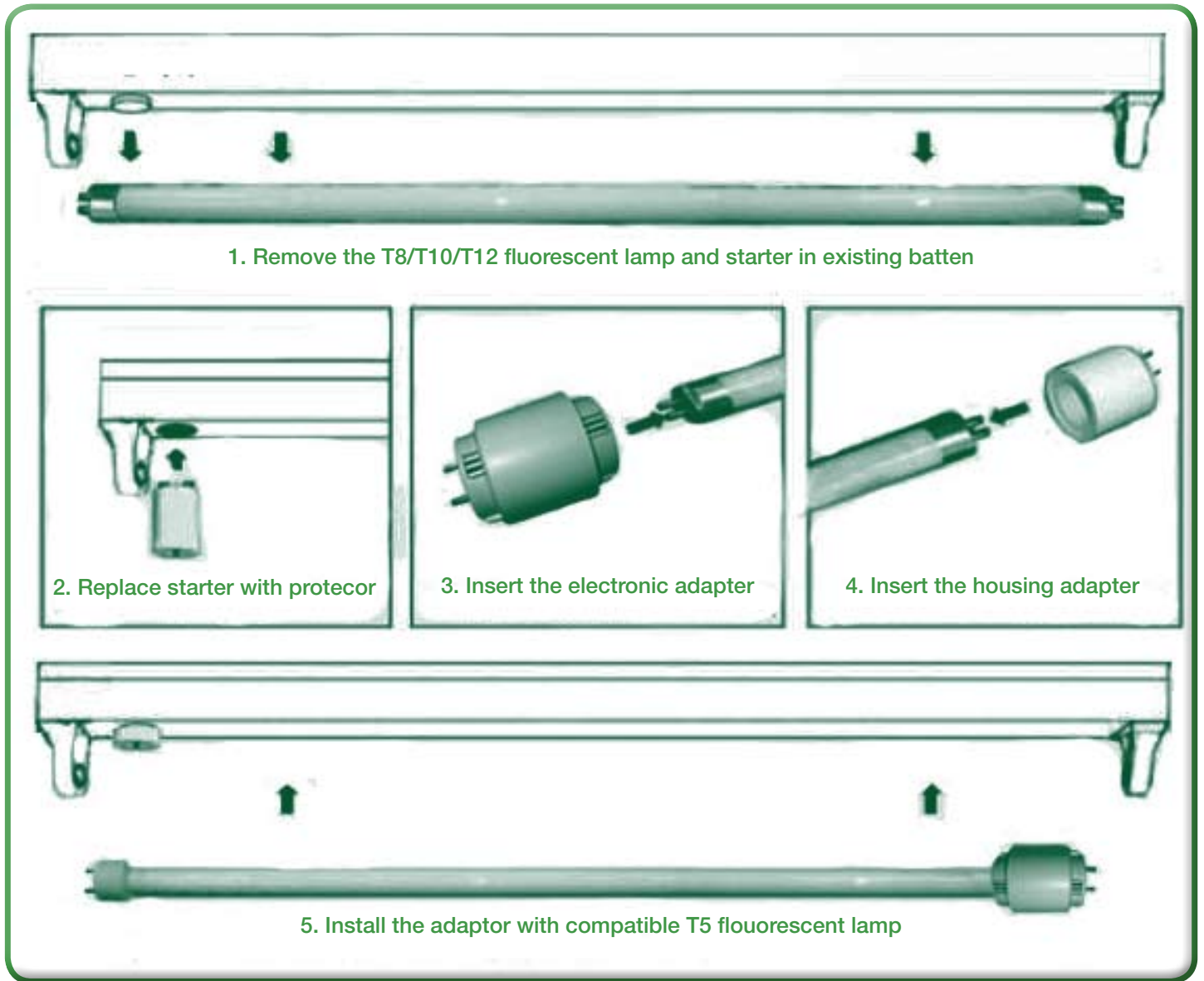


To find out more about the SES-T5 Adaptor range and to receive a quotation contact SES Ltd on:

Tel: **(065) 6895280** • E-mail: **info@smartenergysystems.ie**

Website: **www.smartenergysystems.ie**

Installation Steps




SmartEnergySystems Ltd.
water, energy, environment *save everyday.*

To find out more about the SES-T5 Adaptor range and to reduce your energy cost today, contact SES Ltd on:

Tel: **(065) 6895280** • E-mail: **info@smartenergysystems.ie**

Website: **www.smartenergysystems.ie**